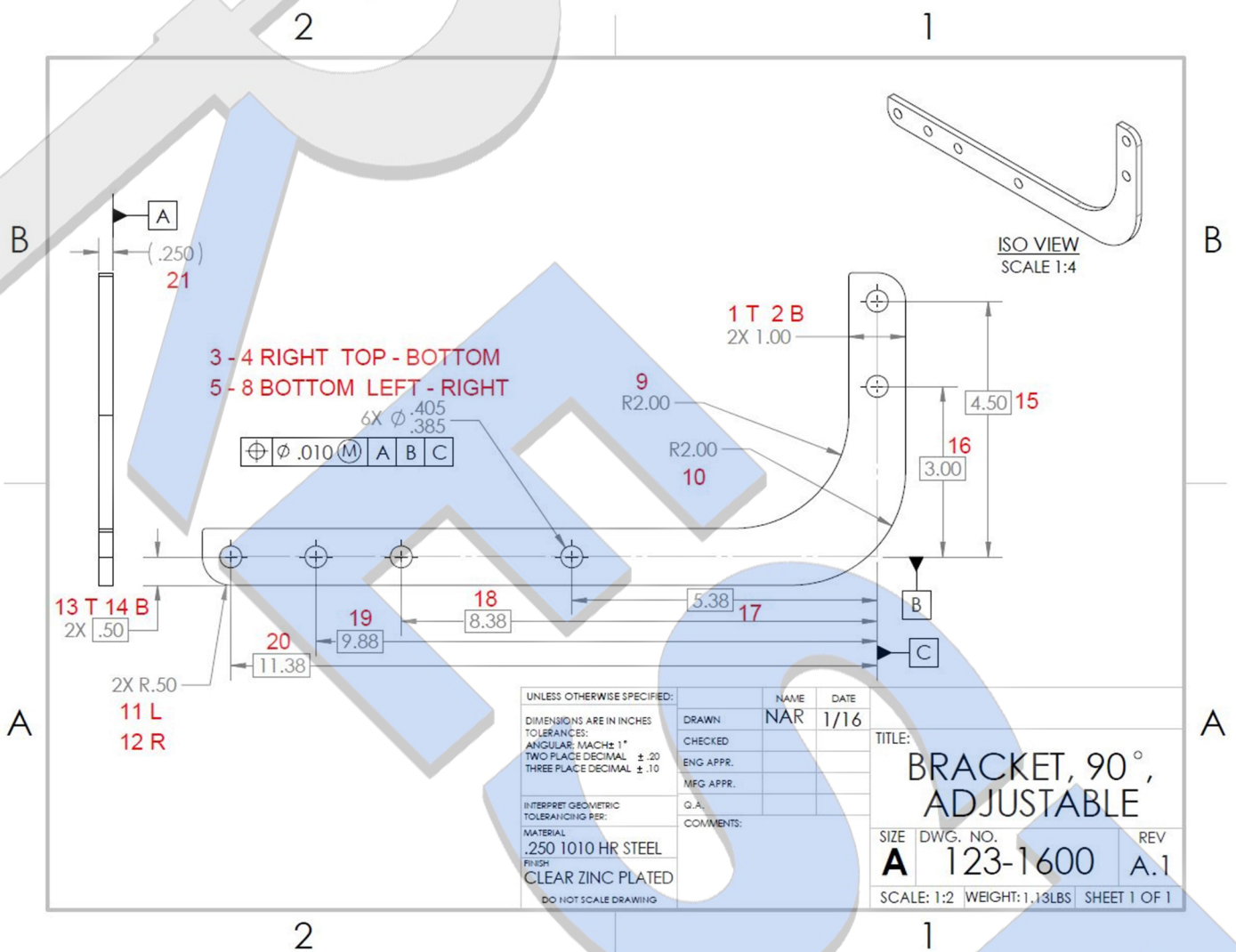


**RESI**

# 123-1600 INSPECTION

Report Author: RASMUS  
Date: 1/4/2016



**Organization:** Rasmus Engineering Services Inc.

**Operator:** Nick Rasmus

**Part name:** BRACKET, 90°, ADJUSTABLE

**Part number:** 123-1600

**Drawing #:** 123-1600 REV A.1

**Serial #:** 001

## Feature Table

Units Inches  
 Coordinate System csys 1  
 Data Alignments drf - A B C

Name	Control	Nom	Meas	Tol	Dev	Test	Out Tol
distance 1	Y Distance	1.000	1.006	±0.020	0.006	Pass	
distance 2	X Distance	1.000	1.004	±0.020	0.004	Pass	
circle 3	∅ 0.385+0.020/+0.000 mating	0.385	0.393	+0.020/0.000	0.008	Pass	
	⊕ ∅ 0.035 (M) A B C		0.067	0.043 (B: 0.008)	0.067	Fail	0.024
	X	4.500	4.509	±0.018	0.009	Pass	
	Y	-0.000	-0.032	±0.018	-0.032	Fail	-0.014
circle 4	∅ 0.385+0.020/+0.000 mating	0.385	0.398	+0.020/0.000	0.013	Pass	
	⊕ ∅ 0.035 (M) A B C		0.049	0.048 (B: 0.013)	0.049	Fail	0.001
	X	3.000	3.012	±0.018	0.012	Pass	
	Y	-0.000	-0.022	±0.018	-0.022	Fail	-0.004
circle 5	∅ 0.385+0.020/+0.000 mating	0.385	0.409	+0.020/0.000	0.024	Fail	0.004
	⊕ ∅ 0.035 (M) A B C		0.050	0.055 (B: 0.020)	0.050	Pass	
	X	0.000	0.002	±0.018	0.002	Pass	
	Y	11.375	11.350	±0.018	-0.025	Fail	-0.007
circle 6	∅ 0.385+0.020/+0.000 mating	0.385	0.402	+0.020/0.000	0.017	Pass	
	⊕ ∅ 0.035 (M) A B C		0.055	0.052 (B: 0.017)	0.055	Fail	0.003
	X	-0.000	-0.003	±0.018	-0.003	Pass	
	Y	9.875	9.848	±0.018	-0.027	Fail	-0.009
circle 7	∅ 0.385+0.020/+0.000 mating	0.385	0.397	+0.020/0.000	0.012	Pass	
	⊕ ∅ 0.035 (M) A B C		0.048	0.047 (B: 0.012)	0.048	Fail	0.001
	X	-0.000	0.001	±0.018	0.001	Pass	
	Y	8.375	8.351	±0.018	-0.024	Fail	-0.006
circle 8	∅ 0.385+0.020/+0.000 mating	0.385	0.402	+0.020/0.000	0.017	Pass	
	⊕ ∅ 0.035 (M) A B C		0.054	0.052 (B: 0.017)	0.054	Fail	0.002
	X	-0.000	0.000	±0.018	0.000	Pass	
	Y	5.375	5.348	±0.018	-0.027	Fail	-0.009
circle 9	Radius	2.000	1.990	±0.020	-0.010	Pass	
circle 10	Radius	2.000	1.937	±0.020	-0.063	Fail	-0.043
circle 11	Radius	0.500	0.500	±0.020	0.000	Pass	
circle 12	Radius	0.500	0.484	±0.020	-0.016	Pass	

**Organization:** Rasmus Engineering Services Inc.

**Operator:** Nick Rasmus

**Part name:** BRACKET, 90 \* , ADJUSTABLE

**Part number:** 123-1600

**Piece:** piece 1

## Feature Table Basic and Reference Dimensions

Name	Control	Nom	Meas	Dev
distance 13	Y Distance	0.50	0.51	0.01
distance 14	X Distance	0.50	0.49	-0.01
distance 15	X Distance	4.50	4.51	0.01
distance 16	X Distance	3.00	3.01	0.01
distance 17	Y Distance	5.37	5.35	-0.02
distance 18	Y Distance	8.37	8.35	-0.02
distance 19	Y Distance	9.87	9.85	-0.02
distance 20	Y Distance	11.38	11.35	-0.03
distance 21	Z Distance	0.25	0.24	-0.01

**Organization:** Rasmus Engineering Services Inc.

**Operator:** Nick Rasmus

**Part name:** BRACKET, 90 \* , ADJUSTABLE

**Part number:** 123-1600

**Piece:** piece 1